

LETTER • OPEN ACCESS

# Sub-microsecond temporal evolution of edge density during edge localized modes in KSTAR tokamak plasmas inferred from ion cyclotron emission

To cite this article: B. Chapman *et al* 2017 *Nucl. Fusion* **57** 124004

View the [article online](#) for updates and enhancements.

## Related content

- [Nonlinear wave interactions generate high-harmonic cyclotron emission from fusion-born protons during a KSTAR ELM crash](#)  
B. Chapman, R.O. Dendy, S.C. Chapman *et al.*
- [Fast particle-driven ion cyclotron emission \(ICE\) in tokamak plasmas and the case for an ICE diagnostic in ITER](#)  
K.G. McClements, R. D'Inca, R.O. Dendy *et al.*
- [Observations and modelling of ion cyclotron emission observed in JET plasmas using a sub-harmonic arc detection system during ion cyclotron resonance heating](#)  
K.G. McClements, A. Brisset, B. Chapman *et al.*

## Recent citations

- [Characteristics of fast  \$^3\text{He}\$  ion velocity distribution exciting ion cyclotron emission on JT-60U](#)  
Shuhei Sumida *et al*
- [Radio frequency measurements of energetic-particle-driven emission using the ion cyclotron emission diagnostic on the DIII-D tokamak](#)  
K. E. Thome *et al*
- [Observations of core ion cyclotron emission on ASDEX Upgrade tokamak](#)  
R. Ochoukov *et al*

## Letter

# Sub-microsecond temporal evolution of edge density during edge localized modes in KSTAR tokamak plasmas inferred from ion cyclotron emission

B. Chapman<sup>1</sup>, R.O. Dendy<sup>1,2</sup>, K.G. McClements<sup>2</sup> , S.C. Chapman<sup>1</sup> , G.S. Yun<sup>3</sup> , S.G. Thatipamula<sup>3</sup> and M.H. Kim<sup>3</sup>

<sup>1</sup> Centre for Fusion, Space and Astrophysics, University of Warwick, Coventry, CV4 7AL, United Kingdom

<sup>2</sup> CCFE, Culham Science Centre, Abingdon, OX14 3DB, United Kingdom

<sup>3</sup> Pohang University of Science and Technology, Pohang, Gyeongbuk 37673, Republic of Korea

E-mail: [B.Chapman@warwick.ac.uk](mailto:B.Chapman@warwick.ac.uk)

Received 2 June 2017, revised 8 September 2017

Accepted for publication 21 September 2017

Published 25 October 2017



CrossMark

## Abstract

During edge localised mode (ELM) crashes in KSTAR deuterium plasmas, bursts of spectrally structured ion cyclotron emission (ICE) are detected. Usually the ICE spectrum chirps downwards during an ELM crash, on sub-microsecond timescales. For KSTAR ICE where the separation of spectral peak frequencies is close to the proton cyclotron frequency  $\Omega_{cp}$  at the outer plasma edge, we show that the driving population of energetic ions is likely to be a subset of the 3 MeV fusion protons, born centrally on deeply passing orbits which drift from the core to the edge plasma. We report first principles modelling of this scenario using a particle-in-cell code, which evolves the full orbit dynamics of large numbers of energetic protons, thermal deuterons, and electrons self-consistently with the electric and magnetic fields. The Fourier transform of the excited fields in the nonlinear saturated regime of the simulations is the theoretical counterpart to the measured ICE spectra. Multiple simulation runs for different, adjacent, values of the plasma density under KSTAR edge conditions enable us to infer the theoretical dependence of ICE spectral structure on the local electron number density. By matching this density dependence to the observed time-dependence of chirping ICE spectra in KSTAR, we obtain sub-microsecond time resolution of the evolving local electron number density during the ELM crash.

Keywords: ELM, ion cyclotron emission, the magnetoacoustic cyclotron instability, tokamak, numerical simulation, particle in cell, KSTAR

(Some figures may appear in colour only in the online journal)



Original content from this work may be used under the terms of the [Creative Commons Attribution 3.0 licence](https://creativecommons.org/licenses/by/3.0/). Any further distribution of this work must maintain attribution to the author(s) and the title of the work, journal citation and DOI.

## 1. Introduction

Understanding the physics of edge localised modes (ELMs) [1–4] in magnetically confined fusion (MCF) plasmas is crucial for the design of future fusion power plants. The same is true of the physics of the energetic ions born at MeV energies [5–7] from fusion reactions between fuel ions in a multi keV thermal plasma. The crash of an ELM involves impulsive relaxation of the edge magnetic field, releasing energy and particles from the plasma at levels which may not be compatible with sustained operation of the next step fusion experiment, ITER [8, 9].

In recent years the KSTAR tokamak has performed a series of experimental campaigns aimed at advancing the current understanding of ELMs. A thorough account of ELM dynamics in KSTAR can be found in [10, 11], in which three distinct stages of ELM filament evolution in KSTAR are detailed: (1) the initial growth of the ELM filaments near the last closed flux surface (LCFS), which grow to a saturated state in  $\sim 300 \mu\text{s}$ ; (2) the interim quasi-steady state of saturated filaments typically persisting for  $\sim 100 \mu\text{s}$ ; and (3) the collapse of the pedestal through multiple toroidally and poloidally localised filament bursts occurring over a time-scale of  $\sim 100 \mu\text{s}$ . This third and final stage of the ELM dynamics is referred to henceforth as the ‘ELM crash’. Towards the end of the ELM crash, one often observes bursts of ion cyclotron emission (ICE) whose spectral structure exhibits frequency chirping over time scales  $\lesssim 10 \mu\text{s}$ . This phenomenology corresponds to ‘stage (4)’ in the characterisation of evolving radio frequency (RF) burst spectra in KSTAR in [11]. This unexpected conjunction between (i) the ELM physics associated with individual filament bursts during this terminal stage of the overall ELM cycle and (ii) the fusion-born ion physics responsible for ICE is the subject of this letter.

ICE comprises suprathreshold radiation in the ion cyclotron frequency range, whose spectrum peaks at successive local cyclotron harmonics of the emitting ion population. ICE has previously been observed in all large toroidal MCF plasmas [12]. ICE is caused by a collective instability, which in its linear phase corresponds to the magnetoacoustic cyclotron instability (MCI) [13–23]. The MCI requires a spatially localised population inversion in velocity space for the energetic ions which drive it. This inversion can arise from, for example, large orbital drift excursions.

In this letter we perform, for the first time, a detailed quantitative comparison between ICE observed during KSTAR ELM crashes and fully nonlinear direct numerical simulations of kinetic particles together with electric and magnetic fields, evolving self-consistently under the Maxwell-Lorentz system of equations. We find good quantitative agreement between the simulated and observed spectra, to the extent that the simulations can be used to infer fast ( $\sim \mu\text{s}$ ) time scale dynamics of the local electron number density in the emitting region.

## 2. ELMs and ICE in KSTAR

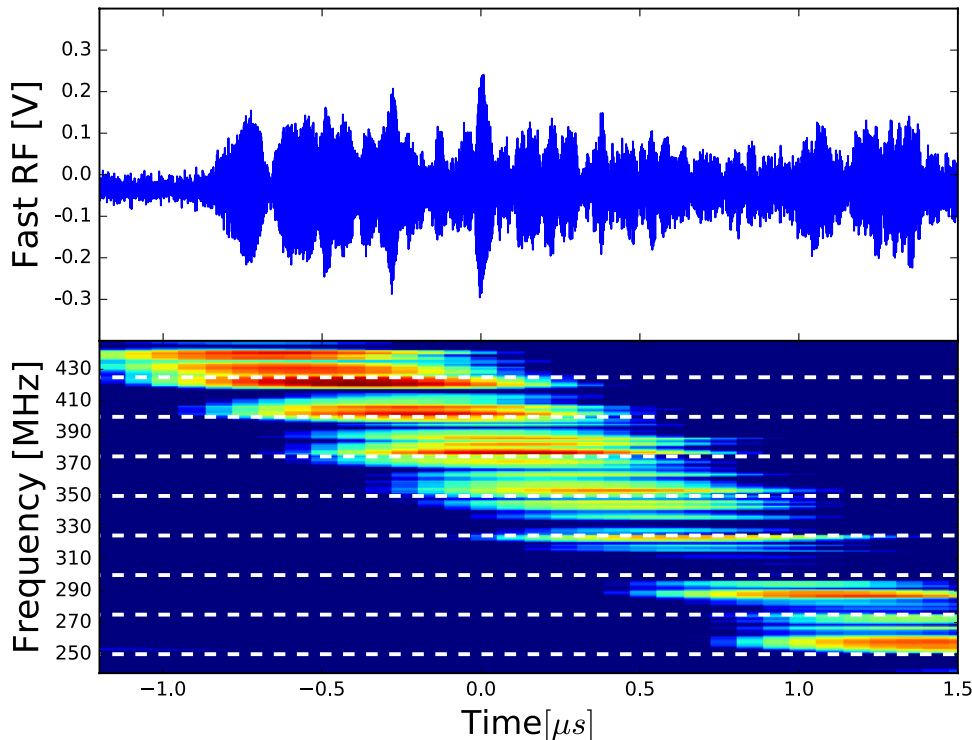
Figure 1 shows an example of downward ICE chirping from a KSTAR plasma that has with toroidal magnetic field at the magnetic axis  $B_0 \simeq 1.99 \text{ T}$ , plasma current  $I_p \simeq 600 \text{ kA}$ , and

total stored energy  $W \sim 380 \text{ kJ}$ . The upper panel displays the measured RF burst spectra as a function of time while the lower panel displays the Fourier transform of this signal. In the lower panel of figure 1, and all subsequent figures of this type, horizontal white lines denote successive proton cyclotron harmonics evaluated for the magnetic field strength at the outer mid-plane edge of the plasma, while  $t = 0$  refers to the centre of a  $200 \mu\text{s}$  segment of RF data. This data is obtained when the RF signal amplitude exceeds a threshold voltage during KSTAR pulse operation, with the acquisition times corresponding roughly to a spike in the  $D_\alpha$  signal [11]. For further details of the fast RF spectrometer system used on KSTAR see for example figure 1 of [11].

The frequency chirping observed in KSTAR is often, as in figure 1, in discrete steps coinciding with the local proton cyclotron frequency. The only energetic protons in KSTAR plasmas are those produced in deuterium–deuterium (D–D) fusion reactions, hence it is likely that ICE at spectral peaks separated by proton cyclotron harmonics is driven by fusion-born protons. If this ICE is driven by the MCI of confined fusion-born protons with spatially localised population inversion, it is necessary to identify a candidate population; and we do so in section 3. The KSTAR experiment is not built on a scale sufficiently large to confine the majority of the energetic ions that are born in fusion reactions within pure deuterium plasmas: 3.0 MeV protons, 0.82 MeV He-3 nuclei, and 1.0 MeV tritons. To drive ICE in KSTAR via the MCI, there must nonetheless exist a collectively unstable subset of fusion-born protons whose orbits are confined within the plasma and traverse the excitation region in the outer midplane edge. The distribution in velocity space of this population must differ qualitatively from that driving ICE in other MCF plasmas such as JET and TFTR [24, 25], because the fusion-born ions on the marginally trapped orbits that give rise to ICE in these two larger experiments are promptly lost from KSTAR during their first drift excursion.

## 3. Single particle orbits

We first calculate orbits of 3.0 MeV protons in equilibrium magnetic fields resembling those of a KSTAR plasma with major radius  $R_0 = 1.8 \text{ m}$ , toroidal magnetic field  $B_0 = 2.27 \text{ T}$ , and plasma current  $I_p = 611 \text{ kA}$ . Our orbit calculations show that almost all centrally-born fusion protons are lost promptly from the plasma on their first drift orbit. However, a small fraction of these protons are born onto deeply passing orbits which remain confined at the plasma edge to which they are carried by their radial drift excursion. Figure 2 shows example orbits of 3.0 MeV protons born in the midplane at initial major radii  $R(0)$  equal to (a) 1.85 m and (b) 1.90 m, and with initial velocity vectors slightly offset from the co-current toroidal direction. These orbits pass through the outer midplane plasma edge, and could give rise there to a localised population in velocity space. We show below that such a distribution can radiate collectively through the MCI and is thus capable of driving ICE at proton cyclotron harmonics characteristic of the outer midplane. We conjecture that when the ELM crash starts, confinement of all energetic ions at the edge is lost; the



**Figure 1.** Temporal evolution of ICE amplitude (upper plot) and spectrum (lower plot) during an ELM crash in KSTAR plasma 11513. Time is measured relative to the moment chirping bursts are observed to begin during the ELM crash ( $\sim 100 \mu s$  after the start of the crash). The horizontal dashed lines in the spectrogram indicate proton cyclotron harmonics.

edge is then rapidly re-populated on a drift orbit timescale by this subset of the energetic fusion-born protons. This leads to the sharp local population inversion that drives ICE. We note that an instance of positive correlation between ELMs and ICE was also seen on JET, see figure 9 of [21].

The spatial location from which ICE is emitted is inferred from the observed frequency interval between successive spectral peak features, which corresponds to the local proton cyclotron frequency. This fixed proton cyclotron frequency implies that the radial location of the emitting region does not change. The full spectral evolution takes place on a microsecond timescale which is very short compared to any characteristic timescale of evolution of the energetic ion distribution in velocity space; thus we do not attempt to model any changes in the energetic ion distribution function.

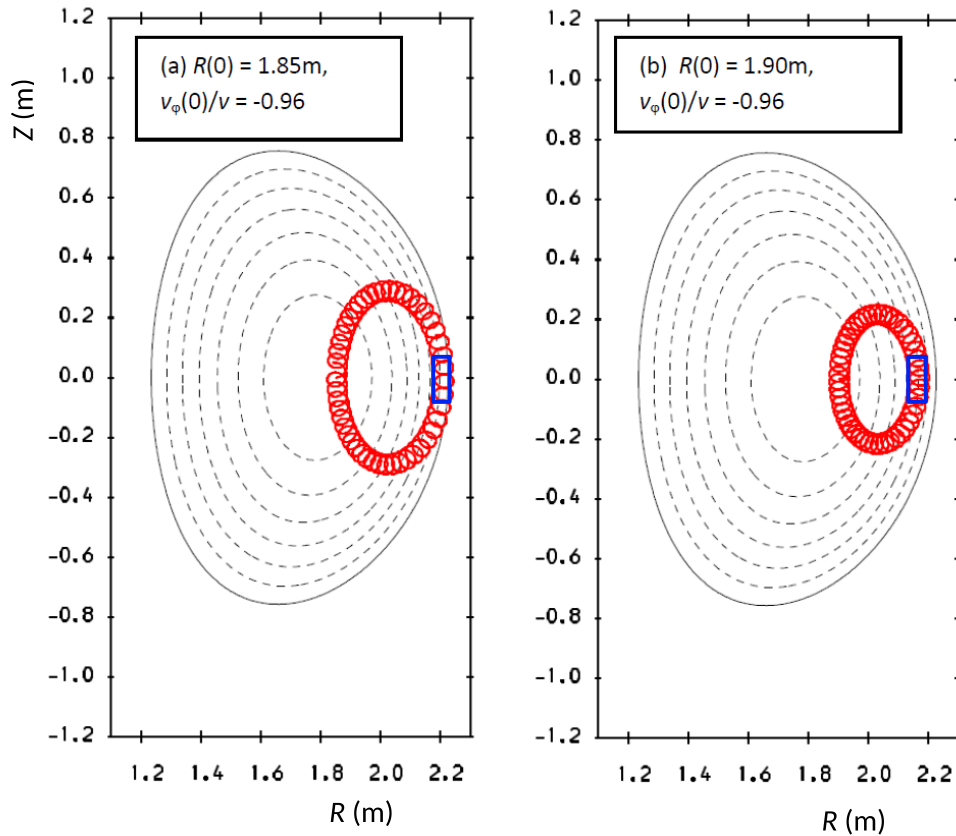
The KSTAR magnetic field strength uniquely defines a radial location for the protons driving the ICE, to high accuracy, at the outer mid-plane.

#### 4. Self consistent simulations of the MCI

To simulate the excitation of ICE by fusion protons in KSTAR we use the EPOCH particle-in-cell (PIC) code [26], with one spatial and three velocity dimensions. This method solves the full set of Maxwell's equations and the relativistic Lorentz force law, to capture the full particle dynamics with respect to all three velocity co-ordinates and a spatial co-ordinate, while self-consistently evolving all three vector components of the electric and magnetic fields. The simulations are set up in planar geometry, hence they do

not incorporate realistic toroidal geometry and the associated compressional Alfvén eigenmode structure [27–31]. Nevertheless this approach has been shown to be successful in capturing most of the underlying physics [32–34], and aligns with the original slab-geometry analytical theory of the MCI [13–23], against which it has been benchmarked, see figure 1 of [32] and figure 1 of [33]. The simulations capture the rapid self-consistent time-evolution of the ion velocity distributions under the MCI, but do not attempt also to capture the much slower (by orders of magnitude) effects of collisional slowing-down.

The deeply passing subset of the fusion-born proton population in the KSTAR plasma edge discussed above has a speed perpendicular to the magnetic field ( $v_{\perp 0}$ ) much smaller than the magnitude of their speed at birth. It is therefore justifiable to represent this by the approximate model of a delta-function ring distribution. Previous analytical [14–17] and first principle, fully self-consistent simulation studies [32–34] of the MCI showed that strong driving of the MCI is enabled if the perpendicular component of the energetic ion velocity is at least comparable to the local Alfvén velocity. In all our simulations,  $v_{\perp 0}$  corresponds to an energy  $150 \text{ keV} \simeq 5\%$  of the birth energy consistent with the orbit calculations shown in figure 2. This is comparable to the local Alfvén speed  $c_A$ , hence high enough to drive the MCI. The large parallel velocities  $v_{\parallel}$  of these passing fusion protons are not represented in the simulations since the parallel dynamics of the fast ions play no role in perpendicular wave propagation. The ratio of proton number density to deuteron number density is  $10^{-3}$  and the total simulation duration is 10 proton cyclotron periods, carrying the MCI into its saturated nonlinear regime. The



**Figure 2.** Poloidal projection of 3.0 MeV fusion proton orbits in the model KSTAR equilibrium with initial velocity vectors slightly offset from the co-current toroidal direction. The blue boxes in both the left and right panels designate the emitting region for the ICE and are centred on the radial location that corresponds to the proton cyclotron frequency whose harmonics are excited in the chirping ICE spectrum. The horizontal extent of these boxes corresponds to the local Larmor radius of cyclotron gyration of an emitting proton.

spatial ( $x$ ) direction is orthogonal to the uniform magnetic field  $\mathbf{B} = B_{\text{cyc}} \mathbf{e}_z$ , so that the propagation direction of waves excited in the system is perpendicular to  $\mathbf{B}$ .  $B_{\text{cyc}}$  denotes the edge magnetic field inferred from the spacing between successive proton cyclotron harmonics observed in the experimental spectrograms. The bulk plasma comprises electrons and deuterons with initial temperature 1 keV.

The distribution of collectively radiated energy between different cyclotron harmonics depends on the character of the instability (the MCI) driving the ICE. A key dimensionless parameter in the analytical theory of the MCI is the ratio of energetic ion perpendicular velocity to the Alfvén speed. Changing the density changes the Alfvén speed, which in turn changes the numerical value of this ratio. This ratio determines the threshold for instability which can be inferred from both linear theory and fully nonlinear self-consistent PIC simulations. These nonlinear simulation results have many good points of contact [32–34] with the linear instability theory of the MCI, see in particular, figures 1–3 in [34]. This means the character of the MCI depends strongly on the local density so that if the local density changes, the set of cyclotron harmonics which are excited by the MCI also changes. Thus the spectral character of the ICE at any time reflects the density-dependence of the MCI.

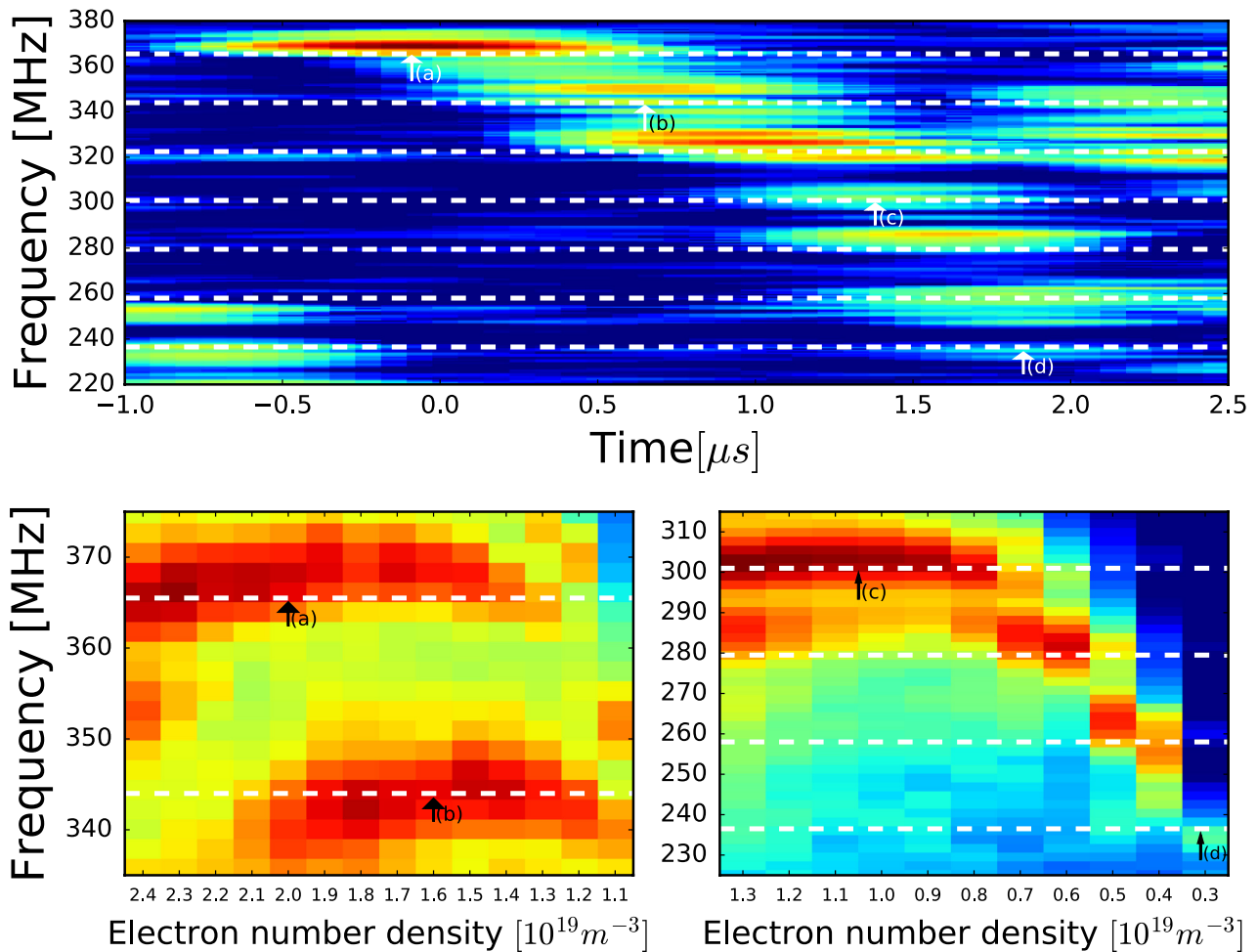
To enable comparison with observations of ICE chirping during the ELM crash in KSTAR plasmas, we run multiple simulations to determine the density-dependence of the MCI

in the fully nonlinear saturated regime. These simulations are carried out with initial electron number densities in the range  $0.2 \times 10^{19} \text{ m}^{-3}$  to  $2.5 \times 10^{19} \text{ m}^{-3}$ . This range reflects Thomson scattering measurements in the edge pedestal (see the last paragraph of section 3 in [11]).

## 5. Simulation results

### 5.1. ICE intensity as a function of frequency and electron number density

Figures 3 and 4 show the spectra of saturated ICE intensity obtained from EPOCH simulations with successive values of electron number density (lower panels), along with the corresponding experimentally-measured spectrograms for downward chirping ICE during ELM crashes in plasmas with  $B_0 = 1.7 \text{ T}$  and  $B_0 = 1.99 \text{ T}$  (upper panels). The lower left and lower right panels correspond to the high and low frequency ranges respectively. Electron number density decreases from left to right, and each vertical strip corresponds to an independent MCI simulation at the density shown. The arrows labelled (a)–(d) denote a mapping between experimentally observed and simulation proton cyclotron harmonics. The boundary of evanescence in the cold plasma limit, defined by the lower hybrid frequency  $\omega_{\text{LH}}$ , is clearly visible. As the electron number density, and subsequently  $\omega_{\text{LH}}$  decrease, the number of modes available for excitation also reduces. For  $n_e \lesssim 1.1 \times 10^{19} \text{ m}^{-3}$ ,



**Figure 3.** Top panel: experimentally-measured fast RF burst spectrogram from KSTAR plasma 11462 with  $B_0 = 1.7$  T and average electron number density before the ELM crash ( $n_e = 2.5 \times 10^{19} m^{-3}$ ). Downward step-wise frequency chirping with proton cyclotron frequency  $f_{cp} \sim 21.5$  MHz is apparent. Lower panels: frequency versus electron number density plots for the nonlinear stage of MCI simulations where  $B_z = B_{cyc} \approx 1.41$  T has been inferred from the data in the top panel. Shading indicates the  $\log_{10}$  of the spectral power in the fluctuating part of the  $B_z$  field component of each simulation.

the spectrum is dominated by a single cyclotron harmonic, with the harmonic number falling monotonically as  $n_e$  decreases. It is apparent that for both values of central magnetic field  $B_0$  shown in figures 3 and 4, the trend in ICE spectral power as a function of frequency and  $n_e$  is the same.

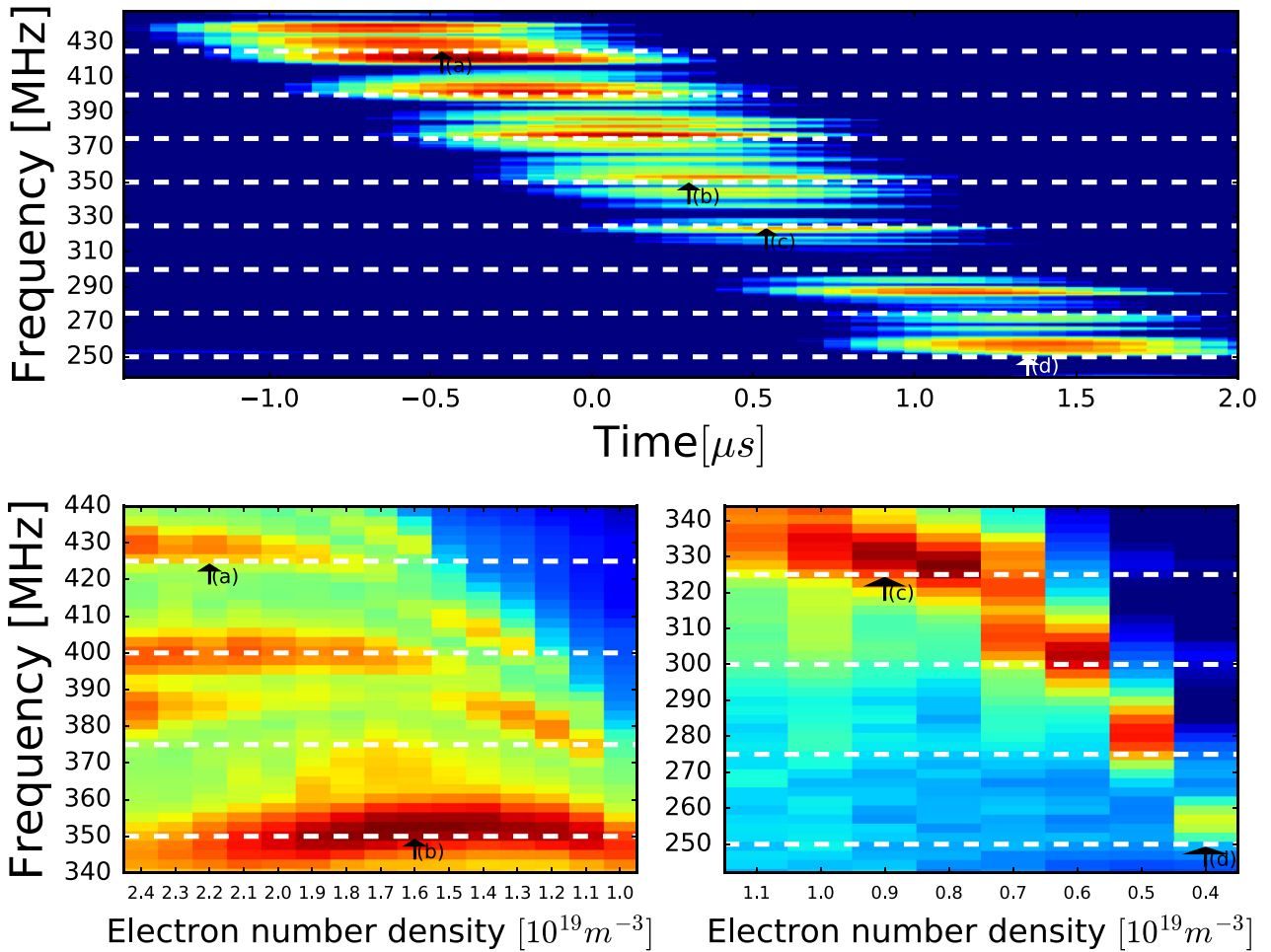
The variation of simulated ICE intensity with electron number density resembles the experimentally-observed variation of ICE intensity with time. We address this in greater detail in section 5.2, meanwhile we note that the striking agreement between the highest and lowest intensity regions in the upper and lower panels of both figures 3 and 4 reinforces the choice of simulation electron number density values which reflect Thompson scattering measurements [11]. There is a ‘missing harmonic’ in the lower panels of figures 3 and 4 at  $f \simeq 323$  MHz and  $f \simeq 375$  MHz respectively. This could be due to periodic boundary conditions, as well as the limitations of a 1D3V model.

For each of the downward ICE pulse-simulation pairs shown in figures 3 and 4 we are able to construct a sequence of mappings from time in the upper panels to density in the lower panels. This is discussed in the next section.

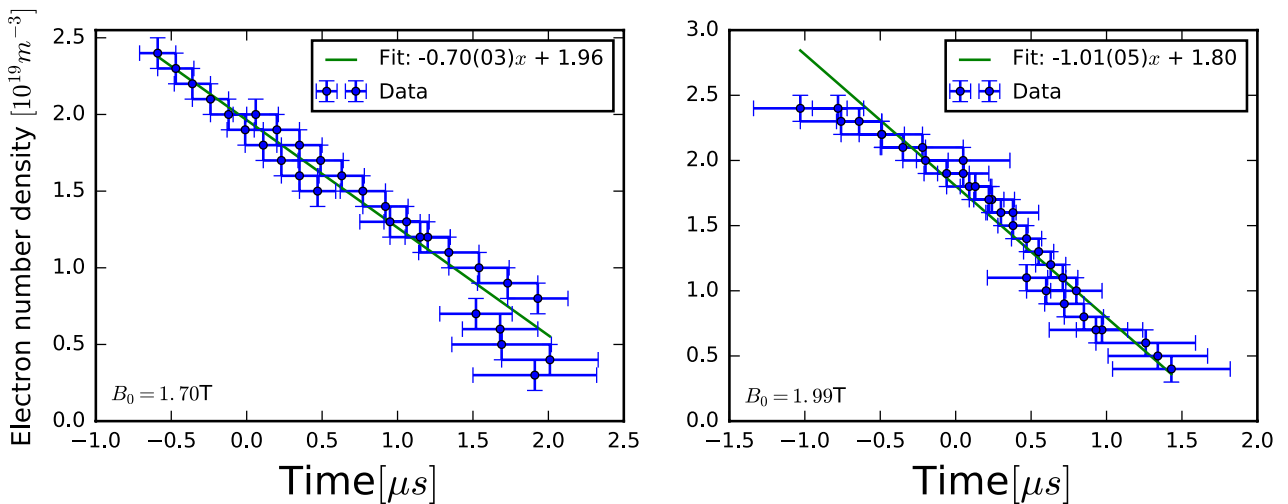
## 5.2. Mapping between computational results and KSTAR observations

Our simulations suggest that the downward chirping of ICE observed during the KSTAR ELM crashes detailed above is likely to be a direct consequence of a rapid local decline in electron number density associated with an ELM filament. An important corollary of this result is that measurements of the ICE spectra can be used to infer the locally declining electron number density as plasma is transported out of the ICE-emitting region by one of the multiple filament bursts that are associated with the ELM crash.

In figure 4 (upper panel), a given ICE spectral feature at a particular cyclotron harmonic in KSTAR can be seen to arise at a time  $t_{start}$  and end at a time  $t_{finish}$ . For this downward chirping case, a neighbouring spectral feature at a lower cyclotron harmonic arises at a slightly later  $t_{start}$  and persists until a slightly later  $t_{finish}$ . In the lower panels of figure 4, a succession of simulated ICE spectra are shown. Each vertical strip represents an ICE simulation run at a different, neighbouring, density. These simulated spectra are arranged in sequence with number density declining from left to right. A particular



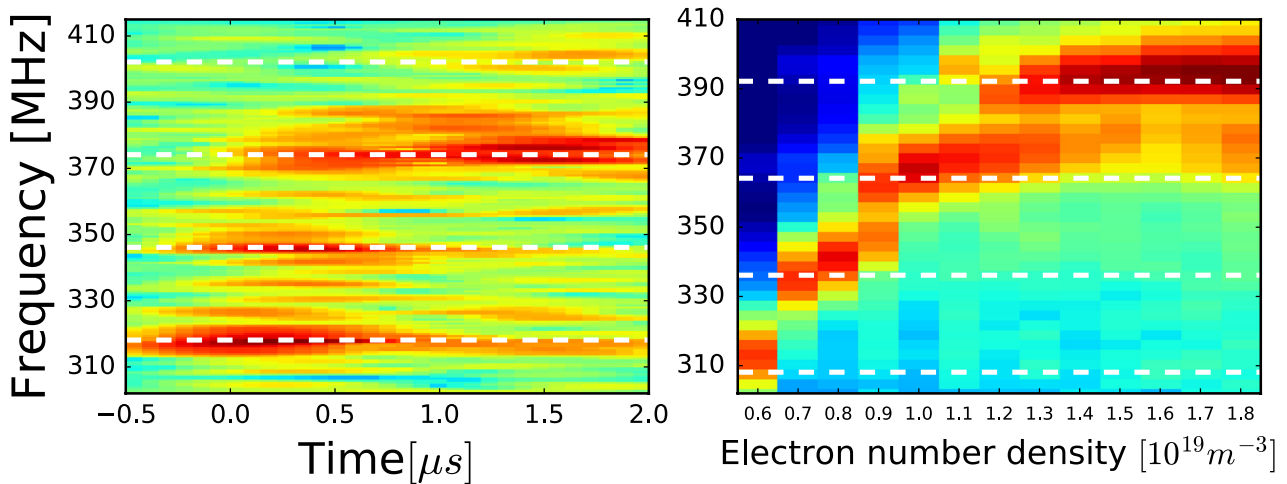
**Figure 4.** Top panel: experimentally-measured fast RF burst spectrogram from KSTAR plasma 11513 with  $B_0 = 1.99$  T and average electron number density before the ELM crash ( $n_e$ ) =  $2.6 \times 10^{19} \text{m}^{-3}$ . Downward step-wise frequency chirping with  $f_{\text{cp}} \sim 25$  MHz is apparent. Lower panels: as the lower panel of figure 3 but with  $B_z = B_{\text{cyc}} \approx 1.64$  T.



**Figure 5.** Local electron number density during an ELM crash in KSTAR inferred from downward chirping ICE measurements compared with saturated MCI simulations. Left (right): fitted and estimated electron number density and time values corresponding to KSTAR plasma 11462 (plasma 11513). The green fit suggests that local electron number density declines approximately linearly with time during the early stages of the ELM crash.

cyclotron harmonic spectral feature (e.g. in the lower right of figure 4) is excited by simulations in a relatively narrow range of densities between  $n_{\text{upper}}$  and  $n_{\text{lower}}$ . Remarkably, the pattern of spectral features in the sequence of simulated

spectra, depending on number density  $n$ , has much in common with the pattern of spectral features in the experimental ICE spectra, depending on time. Hence we can construct a simple mapping from time to density by exploiting these similarities.

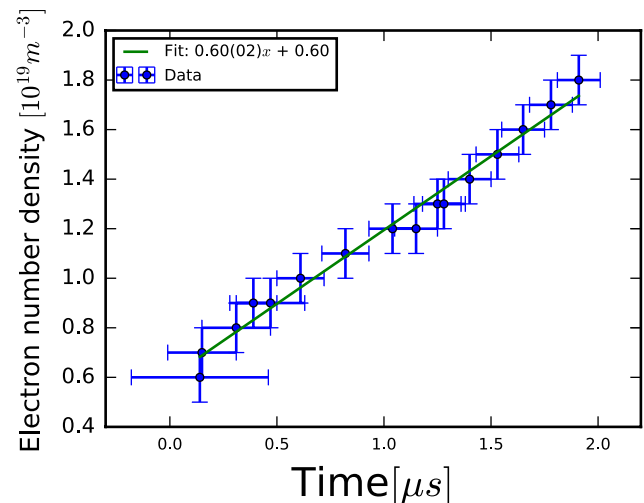


**Figure 6.** Left panel: experimentally-measured fast RF burst spectrogram from KSTAR plasma 11474 with  $B_0 = 2.27$  T and  $\langle n_e \rangle = 2.5 \times 10^{19} \text{ m}^{-3}$ . Upward step-wise frequency chirping with  $f_{cp} \sim 28$  MHz is apparent. Right panel: as the lower panel of figure 3 but with  $B_z = B_{cyc} \approx 1.84$  T.

Essentially, for a given spectral feature, we identify  $n_{\text{upper}}$  with the density at  $t_{\text{start}}$ , and  $n_{\text{lower}}$  with the density at  $t_{\text{finish}}$ .

The foregoing describes the overall approach. It yields, we argue, sub-microsecond time resolution for the ELM filament burst. This is shown in figure 5, the left panel corresponding to figure 3, and the right panel corresponding to figure 4. Our sequence of simulations at different electron number densities, together with the chirping ICE observations, reflect a phase of the ELM crash during which individual, toroidally and poloidally localised filament bursts lasting  $< 10 \mu\text{s}$  (figure 4, [11]) are known to be present. In greater detail, the procedure for obtaining figure 5 (left) from figure 3 is as follows:

- (i) Corresponding experimental and computational spectral features are identified, e.g. the feature denoted by arrow (a) in the upper panel of figure 3 is compared with the feature denoted by (a) in the lower left panel of figure 3.
- (ii) The most intense regions of the experimental and simulation spectral features are identified and quantified with respect to time and density, respectively.
- (iii) If a spectral feature arises intensely in ‘N’ simulations that have different (neighbouring) values of electron number density, the corresponding experimental feature is then divided into N time points.
- (iv) One of these N time points is matched with its corresponding density point, and a coordinate is plotted in figure 5. The vertical error bars in this plot reflect the finite steps in density between simulations, and as such are always  $0.1 \times 10^{19} \text{ m}^{-3}$ . The width of the horizontal error bars is determined by the difference in the successive time-intervals outlined in (iii).
- (v) In the case where we only have one density point corresponding to one spectrally dense feature, e.g. arrows (d) in figure 3, the time is taken to be the centre of the spectrally dense region in the experimental spectrogram. The width of the temporal error bars is then half the width of the spectrally dense region in the upper, experimental plot. Hence the larger error bars at low densities in figure 5.



**Figure 7.** Rising electron number density during an ELM crash inferred from upward chirping ICE measurements in KSTAR plasma 11474 combined with saturated MCI simulations at different densities, see figure 6. The green fit suggests electron number density rises approximately linearly with time during the early stages of the ELM crash.

This yields an available time resolution of the density decrease of order  $\sim 0.1 \mu\text{s}$ . Figure 5 shows that the density decreases approximately linearly on a timescale of about  $2.5 \mu\text{s}$ .

### 5.3. Upward chirping

Upward chirping is occasionally observed during ELM crashes in KSTAR. For logical consistency with the above, we should attribute this to a rare locally rising density due to the rapid motion of an ELM filament transporting additional plasma into the ICE-emitting region during the ELM crash. We test this hypothesis as follows. The time evolution of the corresponding electron number density for the case of upward chirping shown in figure 6 (left panel) has been inferred from the saturated MCI simulations at different electron number densities (figure 6 right panel), and is shown in figure 7.



In figure 6, the separation between successive spectral peaks in the ICE is  $f_{cp} \sim 28$  MHz, which corresponds to a local magnetic field strength of 1.84 T and thus implies that the ICE source is localised to the outer midplane of this KSTAR plasma. The absolute value of each spectral peak frequency is at integer multiples of 28 MHz plus, systematically, 10 MHz. We conjecture that this systematic frequency shift may be a Doppler shift. If, as we suggest, the source plasma for the upward chirping ICE in figure 6 is a moving ELM filament, this Doppler shift would be a consequence of filament motion. Testing and exploitation of this particular aspect of the phenomenology would require information of the  $k_{||}$  spectrum of the ICE, which is not at present available.

## 6. Conclusions

We have shown that harmonic ICE with spacing equal to  $f_{cp}$  in KSTAR deuterium plasmas can be driven by a small subset of the fusion-born proton population originating in the core of the plasma. The drift orbits of these protons have large radial excursions to the outer midplane edge. We have compared the nonlinearly saturated field spectra obtained from multiple MCI simulations at different plasma densities with experimentally observed time evolving ICE spectra. These results suggest that downward chirping of ICE occurs when the emitting fusion-born protons ions are embedded in a local plasma with rapidly falling density. These results also show that the much rarer upward chirping of ICE occurs when the local density is rapidly rising. By combining different simulation spectra with the chirping ICE observed during KSTAR ELM crashes, we have obtained sub-microsecond time resolution measurements of the evolving electron number density in the emitting region. We conjecture that the time-evolution of the electron number density on such rapid timescales in this region results from the motion of an ELM filament; for a detailed account of the experimental set-up and the detection of chirping ICE in conjunction with ELM filaments, see [11]. This letter opens unexpected lines of research linking fusion-born ion physics with ELM crashes in medium size tokamaks such as KSTAR, which generated the ICE observations studied here. It also provides a new, very high time resolution, method of quantifying the experimental phenomenology. The discovery that one can investigate collective fusion-born ion physics in medium size tokamaks, the connection to ELM phenomenology, and the high time resolution, are all new. Because of the relatively wide access that exists to medium-size tokamaks worldwide, combined with the centrality of fusion reactivity and ELMs to tokamak plasma physics, wider exploitation of these results should be possible. Combined with the passive, non-invasive character of ICE measurements, the results of this letter suggest an attractive way forward for future energetic ion measurements in ITER [8, 9].

## Acknowledgments

The authors thank J.W.S. Cook for discussions. This project used the EPOCH code, part funded by UK EPSRC grants EP/G054950/1, EP/G056803/1, EP/G055165/1 and EP/

M022463/1. This work received funding from the RCUK Energy Programme [grant number EP/P012450/1], Euratom, and the National Research Foundation of Korea [grant number 2014M1A7A1A03029881]. S.C.C. acknowledges a Fulbright–Lloyd’s of London Scholarship and AFOSR grant FA9550-17-1-0054. The views and opinions expressed herein do not necessarily reflect those of the European Commission.

## ORCID iDs

K.G. McClements  <https://orcid.org/0000-0002-5162-509X>  
 S.C. Chapman  <https://orcid.org/0000-0003-0053-1584>  
 G. S. Yun  <https://orcid.org/0000-0002-1880-5865>

## References

- [1] Zohm H. 1996 *Plasma Phys. Control. Fusion* **38** 105–28 379
- [2] Loarte A. et al 2003 *Plasma Phys. Control. Fusion* **45** 1549–69
- [3] Kamiya K. et al 2007 *Plasma Phys. Control. Fusion* **49** S43–62
- [4] Leonard A.W. 2014 *Phys. Plasmas* **21** 090501
- [5] Fasoli A. et al 2007 Progress in the ITER physics basis chapter 5: physics of energetic ions *Nucl. Fusion* **47** S264
- [6] Gorelenkov N.N., Pinches S.D. and Toi K. 2014 Energetic particle physics in fusion research in preparation for burning plasma experiments *Nucl. Fusion* **54** 125001
- [7] Duarte V.N., Berk H.L., Gorelenkov N.N., Heidbrink W.W., Kramer G.J., Nazikian R., Pace D.C., Podesta M., Tobias B.J. and Zeeland M.A. 2017 *Nucl. Fusion* **57** 054001
- [8] Hawryluk R.J. et al 2009 *Nucl. Fusion* **49** 065012
- [9] Kessel C.E. et al 2009 *Nucl. Fusion* **49** 085034
- [10] Yun G.S. et al 2011 *Phys. Rev. Lett.* **107** 045004
- [11] Thatipamula S.G., Yun G.S., Leem J., Park H.K., Kim K.W., Akiyama T. and Lee S.G. 2016 *Plasma Phys. Control. Fusion* **58** 065003
- [12] Dendy R.O. and McClements K.G. *Plasma Phys. Control. Fusion* **57** 044002
- [13] Belikov V.S. and Kolesnichenko Ya.I. 1976 *Sov. Phys. Tech. Phys.* **20** 1146
- [14] Dendy R.O., Lashmore-Davies C.N. and Kam K.F. 1992 *Phys. Fluids B* **4** 3996
- [15] Dendy R.O., Lashmore-Davies C.N. and Kam K.F. 1993 *Phys. Fluids B* **5** 1937
- [16] Dendy R.O., Lashmore-Davies C.N., McClements K.G. and Cottrell G.A. 1994 *Phys. Plasmas* **1** 1918
- [17] McClements K.G., Dendy R.O., Lashmore-Davies C.N., Cottrell G.A., Cauffman S. and Majeski R. 1996 *Phys. Plasmas* **3** 543
- [18] Fülöp T. and Lisak M. 1998 *Nucl. Fusion* **38** 761
- [19] Cottrell G.A. and Dendy R.O. 1988 *Phys. Rev. Lett.* **60** 33
- [20] Schild P., Cottrell G.A. and Dendy R.O. 1989 *Nucl. Fusion* **29** 834
- [21] Cottrell G.A. et al 1993 *Nucl. Fusion* **33** 1365
- [22] Cauffman S., Majeski R., McClements K.G. and Dendy R.O. 1995 *Nucl. Fusion* **35** 1597
- [23] McClements K.G., Hunt C., Dendy R.O. and Cottrell G.A. 1999 *Phys. Rev. Lett.* **82** 2099
- [24] Taylor G., Strachan J.D., Budny R.V. and Ernst D.R. 1996 *Phys. Rev. Lett.* **76** 2722
- [25] Thomas P.R. et al 1998 *Phys. Rev. Lett.* **80** 5548

- [26] Arber T.D. *et al* 2015 *Plasma Phys. Control. Fusion* **57** 1–26
- [27] Gorelenkov N.N. and Cheng C.Z. 1995 *Phys. Plasmas* **2** 1961
- [28] Gorelenkov N.N. 2016 *Plasma Phys. Rep.* **42** 430–9
- [29] Smith H.M. and Verwichte E. 2009 *Plasma Phys. Control. Fusion* **51** 075001
- [30] Fülöp T., Lisak M., Kolesnichenko Y.I. and Anderson D. 2000 *Phys. Plasmas* **7** 1479
- [31] Heidbrink W.W. 2008 *Phys. Plasmas* **15** 055501
- [32] Cook J.W.S., Dendy R.O. and Chapman S.C. 2013 *Plasma Phys. Control. Fusion* **55** 065003
- [33] Carbajal L., Dendy R.O., Chapman S.C. and Cook J.W.S. 2014 *Plasma Phys. Control. Fusion* **21** 012106
- [34] Carbajal L., Dendy R.O., Chapman S.C. and Cook J.W.S. 2017 *Phys. Rev. Lett.* **118** 105001